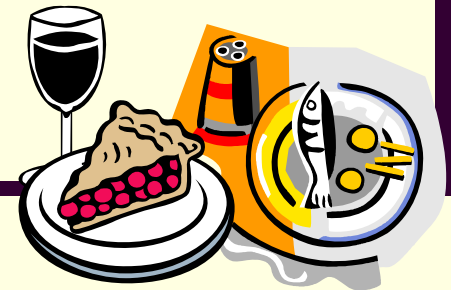




# Analysis of Statewide Student Enrollment Patterns

*It's not a one-course meal, it's a smorgasbord!*



# Two System/Institutional Reports

---

## 1. **Co-enrollment Report**

(enrolled at more than one institution at the same time)

## 2. **Transfer Migration Report**

(enrolled at an institution in fall; next fall, enrolled in different institution)



# Co-enrollment Report

---

## **Descriptives:**

- Examined institutional enrollments in Fall 2003 and in Fall 2004
- Identified students enrolled in more than one institution on census day
- Reports compiled at aggregate level—headcount, student credit hours, and avg credit hours taken

# Co-enrollment Report (continued)

---

## Questions/Assumptions

1. Which sector had the largest number of students co-enrolled?
2. Which institutions had the largest percentage of co-enrolled students compared to total enrollment?
3. What institutional factors contributed to these large numbers of co-enrolled students? By sector?

# Co-enrollment Report (continued)

## Findings: Questions/Assumptions (Table A)

1. **Which sector had the largest number of students co-enrolled?**

*Community Colleges*

*Fall 2003- 3,379*

*(51.3% of All  
co-enrolled students)*

*Fall 2004- 3,708*

*(52.8% of All  
co-enrolled students)*

2. **Which institutions had the largest percentage of co-enrolled students compared to total enrollment?**

*Manhattan Area Technical College*

*Fall 2003 (132 of 350- 37.7%) Fall 2004 (177 of 371- 47.7%)*

*Highland Community College*

*Fall 2003 (588 of 3,152- 18.7%)*

*Fall 2004 (497 of 2,989- 16.6%)*

# Co-enrollment Report (continued)

---

## Findings: Questions/Assumptions

3. What institutional factors contributed to these large numbers of co-enrolled students?

a. *Possibly....?*

*Institutions contracted to teach in another institutions facilities  
(MATC and Cloud County CC)*

b. *Possibly....?*

*Institutions with multiple campuses  
(Highland Community College)*

# Co-enrollment Report (continued)

---

## What would be good to look at later?

- Co-enrollment of students in distance education courses
- Co-enrollment of students in general education courses

# Transfer Migration Report

---

## **Descriptives:**

- Examined institutional enrollments in Fall 2003 and in Fall 2004
- Identified students enrolled in more than one institution on census day
- Co-enrolled students excluded
- Reports compiled at aggregate level—  
“transfer-out” institution by “transfer-in”  
institution;
  - Number of transfer students
  - Student credit hours at both institutions

# Transfer Migration Report (continued)

---

## Questions/Assumptions

1. Are there any migration patterns?
  
2. Are there any changes in student status in any of the patterns?
  - a. Student level
  - b. Degree seeking and non-degree seeking
  - c. Full-time and part-time

# Transfer Migration Report (continued)

## Questions/Assumptions

1. Are there any migration patterns? (Table B)

	Institution Attended in Fall 2004			
Institution attended in Fall 2003	Universities	Community colleges	Technical Colleges	Total
Universities	1,385	1,743	66	3,208
Community colleges	6,631	1,665	233	8,596
Technical Colleges	51	206	2	259
Total	8,147	3,701	385	12,233

(Technical Schools not shown, but included in Total)

# Transfer Migration Report (continued)

---

## Questions/Assumptions

2. Are there any changes in student status in any of the patterns?
  - a. Student level (Table B)
    1. Large numbers of student (freshmen, sophomore, and non-degree seeking student) transferring to universities – (*expected?*)
    2. Significant number of freshmen at universities transferring to community college – (*expected?*)

# Transfer Migration Report (continued)

---

## Questions/Assumptions

2. Are there any changes in student status in any of the patterns?  
(Table C)
  - b. Degree seeking and non-degree seeking
    1. Significant numbers of DS and NDS students at community colleges enrolling in universities as degree-seeking
    2. Correlated numbers of DS university students to DS @ community college or DS @ other university

# Transfer Migration Report (continued)

---

## Questions/Assumptions

2. Are there any changes in student status in any of the patterns?
  - c. Full-time and Part-time (Table D)
    1. Significant numbers of FT and PT students at community colleges enrolling in universities as FT student  
(largest number – CC PT to Univ. FT status)

# Transfer Migration Report (continued)

---

## What would be good to look at later?

- Examine first-time freshmen within transfer rates
- Use academic year data, not fall data
- Do comparisons by Major/discipline or GPA

# Summary

---

## **KSPSD established to--**

- **provide reports to assist KBOR**
  - Legislature
  - Reporting to constituents
  - Seamless transitions across system
- **Provide reports to assist Institutions**
  - Reporting
  - Guide policies (transfer, articulations)
  - Services for students



**Co-enrollment and Total Enrollment Numbers  
By Sector and Institution (Fall 2003 and Fall 2004)**

Table A

Institution	Fall 2003			Fall 2004		
	# of Co-Enrolled Students	Total Enrollment	%	# of Co-Enrolled Students	Total Enrollment	%
<b>Universities</b>						
Emporia State University	231	6,278	3.7%	250	6,194	4.0%
Fort Hays State University	175	7,373	2.4%	208	8,500	2.4%
Kansas State University	613	23,050	2.7%	596	23,151	2.6%
University Of Kansas	668	26,814	2.5%	768	26,980	2.8%
University of Kansas - Medical Center	27	1,766	1.5%	27	1,925	1.4%
Pittsburg State University	174	6,731	2.6%	135	6,537	2.1%
Wichita State University	532	14,570	3.7%	596	14,039	4.2%
Washburn University	256	7,002	3.7%	314	7,251	4.3%
<b>Total</b>	<b>2,676</b>	<b>93,584</b>	<b>2.9%</b>	<b>2,894</b>	<b>94,577</b>	<b>3.1%</b>
<b>Community Colleges</b>						
Allen County Community College	136	2,321	5.9%	153	2,434	6.3%
Barton County Community College	153	3,032	5.0%	219	3,976	5.5%
Butler Community College	446	8,631	5.2%	496	8,793	5.6%
Cloud County Community College	319	3,048	10.5%	291	2,861	10.2%
Coffeyville Community College	29	1,766	1.6%	37	2,067	1.8%
Colby Community College	94	1,951	4.8%	91	1,761	5.2%
Cowley County Community College	342	4,642	7.4%	304	4,523	6.7%
Dodge City Community College	30	1,979	1.5%	31	2,025	1.5%
Fort Scott Community College	39	1,923	2.0%	32	1,895	1.7%
Garden City Community College	38	2,177	1.7%	56	2,276	2.5%
Highland Community College	588	3,152	18.7%	497	2,989	16.6%
Hutchinson Community College	69	4,312	1.6%	130	4,526	2.9%
Independence Community College	31	1,120	2.8%	34	961	3.5%
Johnson County Community College	567	18,432	3.1%	672	18,612	3.6%
Kansas City Kansas Community College	194	5,642	3.4%	262	5,573	4.7%
Labette Community College	92	1,292	7.1%	95	1,376	6.9%
Neosho Community College	143	1,824	7.8%	207	1,925	10.8%
Pratt Community College	44	1,430	3.1%	67	1,455	4.6%
Seward County Community College	25	1,987	1.3%	34	1,831	1.9%
<b>Total</b>	<b>3,379</b>	<b>70,661</b>	<b>4.8%</b>	<b>3,708</b>	<b>71,859</b>	<b>5.2%</b>
<b>Technical Institutions</b>						
Flint Hills Technical College	69	380	18.2%	51	394	12.9%
Kansas City Area Technical School	9	847	1.1%	9	896	1.0%
Kaw Area Technical School	23	169	13.6%	23	859	2.7%
Manhattan Area Technical College	132	350	37.7%	177	371	47.7%
North Central Kansas Technical College	93	495	18.8%	57	508	11.2%
Northeast Kansas Area Technical College	24	280	8.6%	7	275	2.5%
Northwest Kansas Area Technical College	56	318	17.6%	47	272	17.3%
Salina Area Technical School	4	327	1.2%	2	296	0.7%
Southwest Kansas Area Technical School	5	239	2.1%	0	284	0.0%
Wichita Area Technical College	114	2,052	5.6%	51	965	5.3%
<b>Total</b>	<b>529</b>	<b>5,457</b>	<b>9.7%</b>	<b>424</b>	<b>5,120</b>	<b>8.3%</b>
<b>Grand Total</b>	<b>6,584</b>	<b>169,702</b>	<b>3.9%</b>	<b>7,026</b>	<b>171,556</b>	<b>4.1%</b>

Table B

**Number of Students Enrolled in Fall 2003 at One Institution, who then Enrolled in A Different Institution in Fall 2004  
By Student Level and Institution Sector**

*Fall 2004 Institutions*

<i>Fall 2003 Institutions</i>	<b>Student Level</b>	<b>Universities</b>	<b>Community Colleges</b>	<b>Technical Colleges</b>	<b>Technical Schools</b>	<b>Grand Total</b>
<b>Universities</b>	Freshmen	486	927	37	9	1,459
	Sophomore	349	348	14	4	715
	Junior	236	186	7	0	429
	Senior	114	178	8	0	300
	Not Otherwise Classified degree-seeking UG student	34	14	0	1	49
	Non-degree seeking UG student	166	90	0	0	256
<b>Universities Total</b>		<b>1,385</b>	<b>1,743</b>	<b>66</b>	<b>14</b>	<b>3,208</b>
<b>Community Colleges</b>	Freshmen	1,344	649	122	34	2,149
	Sophomore	1,769	259	43	15	2,086
	Not Otherwise Classified degree-seeking UG student	473	151	11	2	637
	Non-degree seeking UG student	3,045	606	57	16	3,724
<b>Community Colleges Total</b>		<b>6,631</b>	<b>1,665</b>	<b>233</b>	<b>67</b>	<b>8,596</b>
<b>Technical Colleges</b>	Freshmen	30	152	1	0	183
	Sophomore	12	38	0	0	50
	Not Otherwise Classified degree-seeking UG student	6	10	0	0	16
	Non-degree seeking UG student	3	6	1	0	10
<b>Technical Colleges Total</b>		<b>51</b>	<b>206</b>	<b>2</b>	<b>0</b>	<b>259</b>
<b>Technical Schools</b>	Freshmen	48	40	2	0	90
	Sophomore	4	5	0	0	9
	Not Otherwise Classified degree-seeking UG student	24	11	1	0	36
	Non-degree seeking UG student	4	31	0	0	35
<b>Technical Schools Total</b>		<b>80</b>	<b>87</b>	<b>3</b>	<b>0</b>	<b>170</b>
<b>Grand Total</b>		<b>8,147</b>	<b>3,701</b>	<b>304</b>	<b>81</b>	<b>12,233</b>

Table C

**Number of Students Enrolled in Fall 2003 at One Institution, who then Enrolled in A Different Institution in Fall 2004  
By Degree Intentions and Institution Sector**

<i>Fall 2003 Institutions</i>		<i>Fall 2004 Institutions</i>							<b>Grand Total</b>
		Universities			Community Colleges			Technical Institutions	
		Deg seek	ND seek	Total	Deg seek	ND seek	Total	Total	
<b>Universities</b>	Degree seeking	1,149	36	<b>1,185</b>	1,194	445	<b>1,639</b>	<b>79</b>	<b>2,903</b>
	Non-degree seeking	165	35	<b>200</b>	54	50	<b>104</b>	<b>1</b>	<b>305</b>
<b>Universities Total</b>		<b>1,314</b>	<b>71</b>	<b>1,385</b>	<b>1,248</b>	<b>495</b>	<b>1,743</b>	<b>80</b>	<b>3,208</b>
<b>Community Colleges</b>	Degree seeking	3,087	26	<b>3,113</b>	798	110	<b>908</b>	<b>214</b>	<b>4,235</b>
	Non-degree seeking	3,017	501	<b>3,518</b>	534	223	<b>757</b>	<b>86</b>	<b>4,361</b>
<b>Community Colleges Total</b>		<b>6,104</b>	<b>527</b>	<b>6,631</b>	<b>1,332</b>	<b>333</b>	<b>1,665</b>	<b>300</b>	<b>8,596</b>
<b>Technical institutions</b>		94	37	<b>131</b>	228	65	<b>293</b>	<b>5</b>	<b>429</b>
<b>Grand Total</b>		<b>7,512</b>	<b>635</b>	<b>8,147</b>	<b>2,808</b>	<b>893</b>	<b>3,701</b>	<b>385</b>	<b>12,233</b>

Table D

**Number of Students Enrolled in Fall 2003 at One Institution, who then Enrolled in A Different Institution in Fall 2004  
By Student Status and Institution Sector**

<i>Fall 2003 Institutions</i>		<i>Fall 2004 Institutions</i>							<b>Grand Total</b>
		Universities			Community Colleges			Technical Institutions	
		Full-time	Part-time	Total	Full-time	Part-time	Total	Total	
<b>Universities</b>	Full-time	976	97	<b>1,073</b>	760	559	<b>1,319</b>	<b>61</b>	<b>2,453</b>
	Part-time	275	37	<b>312</b>	153	271	<b>424</b>	<b>19</b>	<b>755</b>
<b>Universities Total</b>		<b>1,251</b>	<b>134</b>	<b>1,385</b>	<b>913</b>	<b>830</b>	<b>1,743</b>	<b>80</b>	<b>3,208</b>
<b>Community Colleges</b>	Full-time	2,775	245	<b>3,020</b>	390	241	<b>631</b>	<b>95</b>	<b>3,746</b>
	Part-time	3,275	336	<b>3,611</b>	692	342	<b>1,034</b>	<b>205</b>	<b>4,850</b>
<b>Community Colleges Total</b>		<b>6,050</b>	<b>581</b>	<b>6,631</b>	<b>1,082</b>	<b>583</b>	<b>1,665</b>	<b>300</b>	<b>8,596</b>
<b>Technical institutions</b>		87	44	<b>131</b>	131	162	<b>293</b>	<b>5</b>	<b>429</b>
<b>Grand Total</b>		<b>7,388</b>	<b>759</b>	<b>8,147</b>	<b>2,126</b>	<b>1,575</b>	<b>3,701</b>	<b>385</b>	<b>12,233</b>